



PM550

# PM550

## Технические характеристики



### System

Qualcomm Octa-core @1.2GHz  
2GB RAM / 16GB ROM

### Communication

802.11a/b/g/n/d/h/i/k/r/v  
Bluetooth Class I 4.1  
Fast Roaming: PMKID Caching, Cisco  
CCKM, 802.11r  
High speed USB typeC port

### User Environment

Operating Temperature  
-20° to 60°C  
Storage Temperature  
-25° to 70°C

### Display (Gorilla Glass)

4.3" WVGA, 500+ nits (Candela)  
Glove mode  
Usable in rain

### Operating system

Android 7.1.2

### Durability

IP65, 1.8m drop to concrete at room  
temperature, 1.5m drop to concrete  
across operating temperature range  
MIL-STD 810G, 1,000 drops from 1m

### Dimensions & weight

204.5 X 79 X 175 mm  
586g incl. battery

### Battery

6,300mAh removable  
60mAh Backup battery for Hot-Swap

### Sensor

Accelerometer Sensor



# PM550

## Технические характеристики



### Function Keys

Easy to reach function keys for quick access

### Integrated Battery

Optimal weight distribution due to battery in pistol grip

### EmKit™

Point Mobile's Service Kit EmKit™ pre-installed

### Ultra -durable Connector

Can take at least 100,000 insertions without breaking  
Additional USB-C connector for communication and charging



### Notification

Top-front, bottom, touch panel dual color LEDs for scanning and charging

### Various Scan Options

2D Mid-range or 1D/2D Extra-long range imager  
Extended Wedge

### Ergonomic Design

Rubber corners for extreme durability and ergonomics

### Keypad Options

Choose between comfortable to use num pad or full alphanumeric keypad

N6603ER



EX25



### Standard Accessories



**AC/DC Power  
Adaptor**



**Country Plug  
(US, EU, UK, AU)**



**Standard  
battery (6,300mAh)**



**Hand strap**

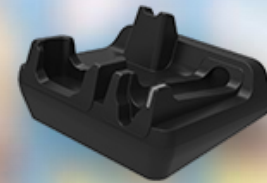


**LCD  
Protection  
Film**



**USB Type-C cable**

### Optional Accessories



**Single Slot  
Cradle  
(opt. Ethernet)**



**6 Slot  
Battery  
Charger**